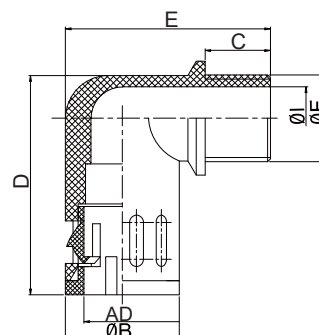


WQW1 直角软管接头 Elbow Connector

- 材料: 尼龙
- 颜色: 深灰色(RAL 7037), 黑色(RAL 9005)
- 温度: -40°C~100°C, 短时达到120°C
- 阻燃等级: V2(UL94)
- 防护等级: IP66
- 阻燃性能: 自熄灭性好, 不含卤素、磷、镉等, 通过RoHS测试
- 适配: 除重载型WYK软管外的所有软管

- Material: Polyamide
- Color: grey (RAL 7037), black (RAL 9005)
- Temperature Range: Min -40°C, Max 100°C, Short-term 120°C
- Flame-retardant: V2(UL94)
- Protection degree: IP66
- Flame-retardant: Self-extinguishing, free of halogen, phosphor and cadmium, passed RoHS.
- Fit with: All tubing except WYK tubing



UL证书号: E317026



WQW1-P 直角软管接头 Elbow Connector

灰色编号 Article no. grey	黑色编号 Article no. black	螺纹规格 Thread dimension	适配软管规格 Fits to tubing size	φ I ID mm	φ B OD mm	C Thread length	D Total length	E Total height	φ F Conne- ction	包装单位 Packet units
WQW1-P07G/AD10.0	WQW1-P07B/AD10.0	PG7	AD10.0	8.5	17	11.5	34	33.5	16	50
WQW1-P09G/AD13.0	WQW1-P09B/AD13.0	PG9	AD13.0	1	20	11.5	38.5	36	20	50
WQW1-P11G/AD15.8	WQW1-P11B/AD15.8	PG11	AD15.8	14	23	12	43.5	40.5	23	50
WQW1-P13.5G/AD18.5	WQW1-P13.5B/AD18.5	PG13.5	AD18.5	15.5	26	13	47.5	45	27	50
WQW1-P16G/AD21.2	WQW1-P16B/AD21.2	PG16	AD21.2	18	29.5	13	51.5	48	27	25
WQW1-P21G/AD28.5	WQW1-P21B/AD28.5	PG21	AD28.5	23.5	37	13	59	56	34	20
WQW1-P29G/AD34.5	WQW1-P29B/AD34.5	PG29	AD34.5	31	44	15	70.5	65.5	43	10
WQW1-P36G/AD42.5	WQW1-P36B/AD42.5	PG36	AD42.5	39	52	15	81	73.5	56	5
WQW1-P48G/AD54.5	WQW1-P48B/AD54.5	PG48	AD54.5	48.5	64	16	91	86.5	68	4

WQW1-G 直角软管接头 Elbow Connector

灰色编号 Article no. grey	黑色编号 Article no. black	螺纹规格 Thread dimension	适配软管规格 Fits to tubing size	φ I ID mm	φ B OD mm	C Thread length	D Total length	E Total height	φ F Conne- ction	包装单位 Packet units
WQW1-G1/4G/AD10.0	WQW1-G1/4B/AD10.0	G 1/4"	AD10.0	8.5	17	11.5	34	33.5	16	50
WQW1-G3/8G/AD13.0	WQW1-G3/8B/AD13.0	G 3/8"	AD13.0	11	20	11.5	38.5	36	20	50
WQW1-G3/8G/AD15.8	WQW1-G3/8B/AD15.8	G 3/8"	AD15.8	12	23	12	43.5	40.5	23	50
WQW1-G1/2G/AD15.8	WQW1-G1/2B/AD15.8	G 1/2"	AD15.8	14	23	12	43.5	40.5	23	50
WQW1-G1/2G/AD21.2	WQW1-G1/2B/AD21.2	G 1/2"	AD21.2	15.5	29.5	13	51.5	48	27	25
WQW1-G3/4G/AD28.5	WQW1-G3/4B/AD28.5	G 3/4"	AD28.5	21.5	37	13	59	56	34	20
WQW1-G1G/AD34.5	WQW1-G1B/AD34.5	G 1"	AD34.5	25	44	15	70.5	65.5	43	10
WQW1-G1 1/4G/AD42.5	WQW1-G1 1/4B/AD42.5	G 1 1/4"	AD42.5	36	52	15	81	73.5	56	5
WQW1-G1 1/2G/AD54.5	WQW1-G1 1/2B/AD54.5	G 1 1/2"	AD54.5	41	64	16	91	86.5	68	4
WQW1-G2G/AD54.5	WQW1-G2B/AD54.5	G 2"	AD54.5	48.5	64	16	91	86.5	68	4